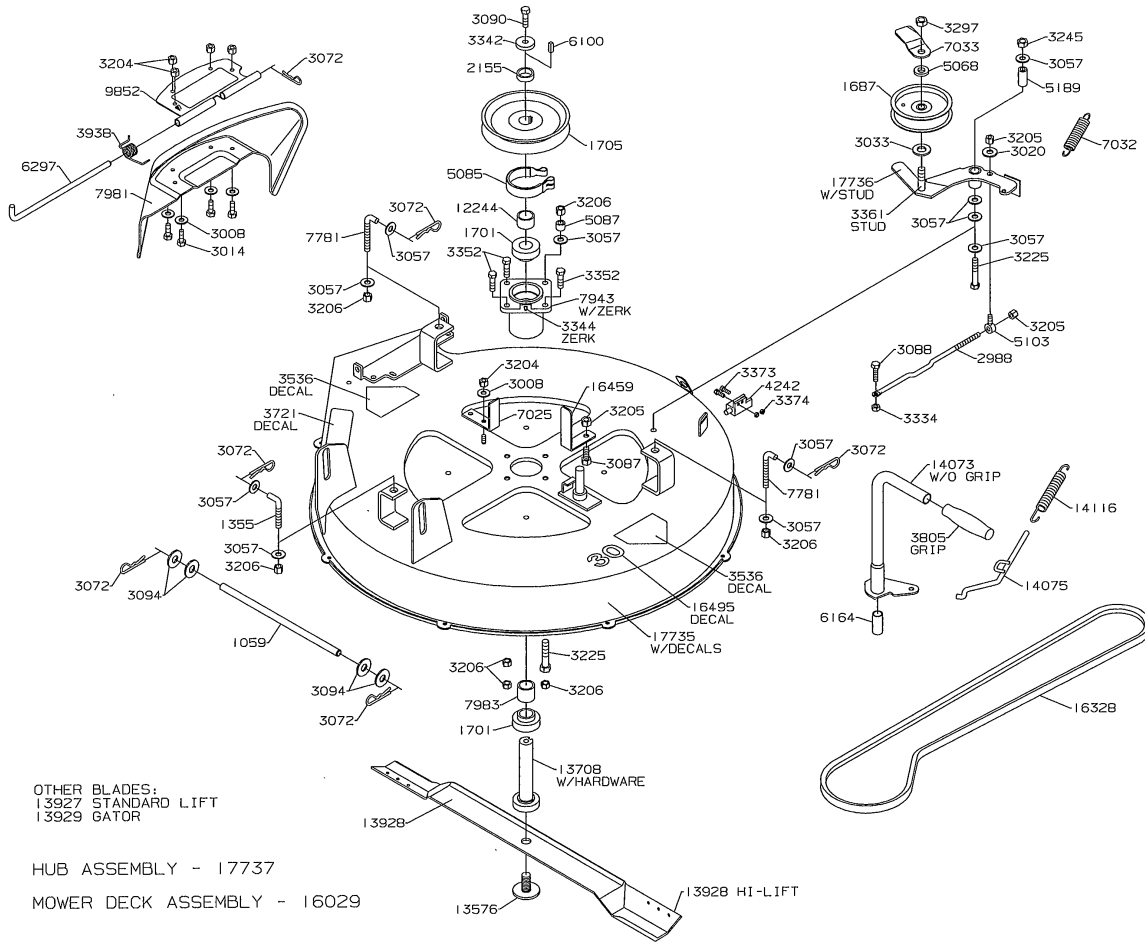


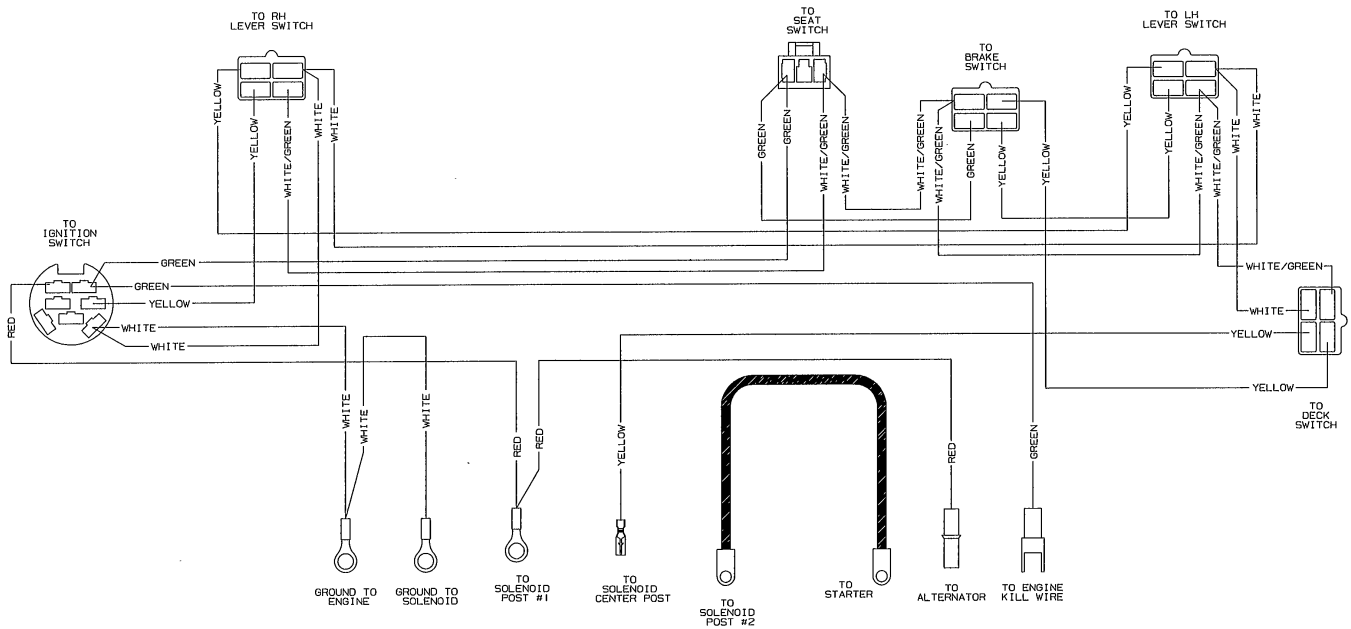
2006 PRODUCTION

30" SPEEDZTR CHASSIS

2006 PRODUCTION

30" SPEEDZTR MOWER DECK





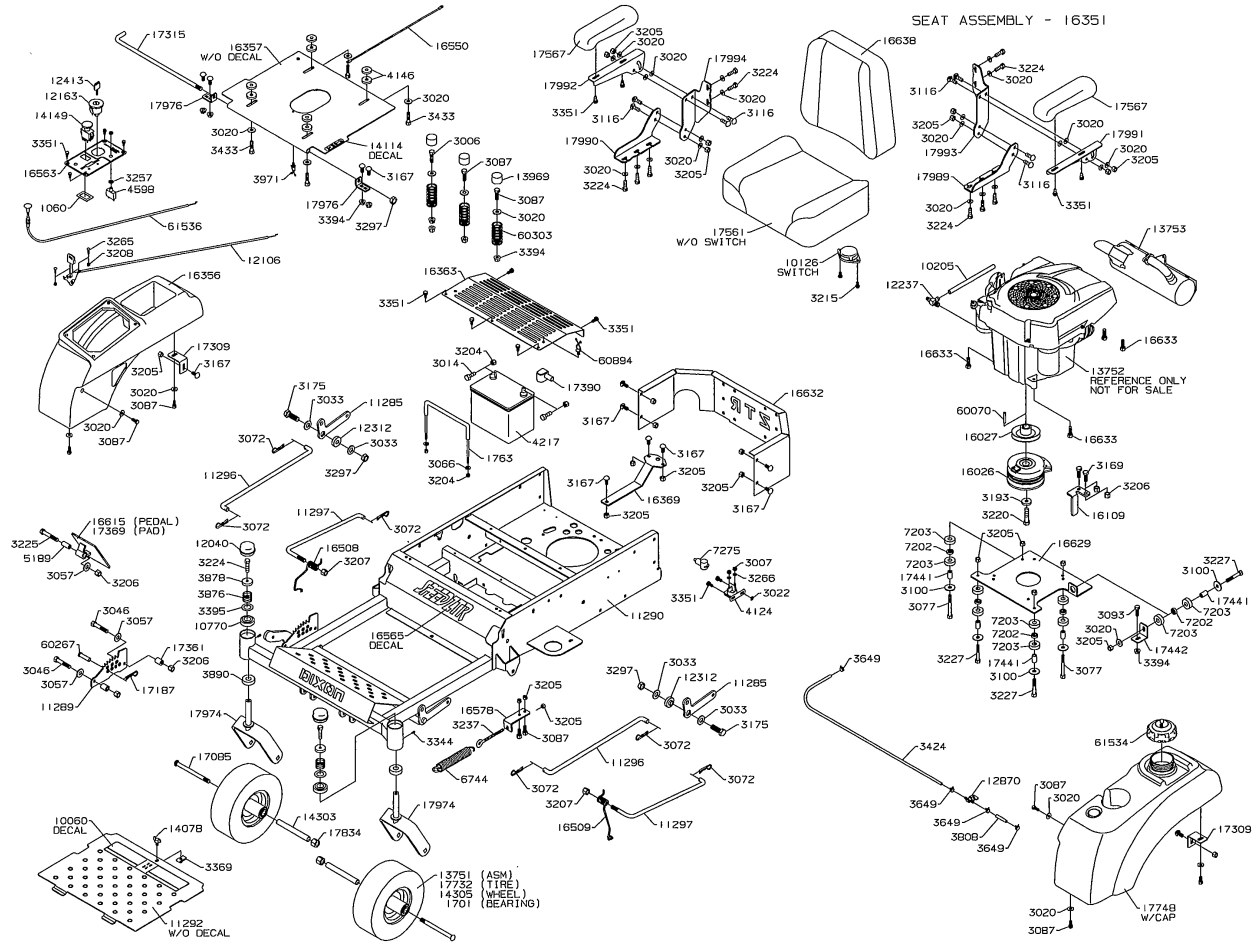
WIRING LOOM - 16453  
 (INCLUDES SOL. TO STARTER 4210)  
 BATTERY CABLE - 4215  
 BATTERY GROUND CABLE - 16454  
 CHARGE-N-HOLD WIRE HARNESS - 78012

**2006 PRODUCTION**

**30" SPEEDZTR WIRING**





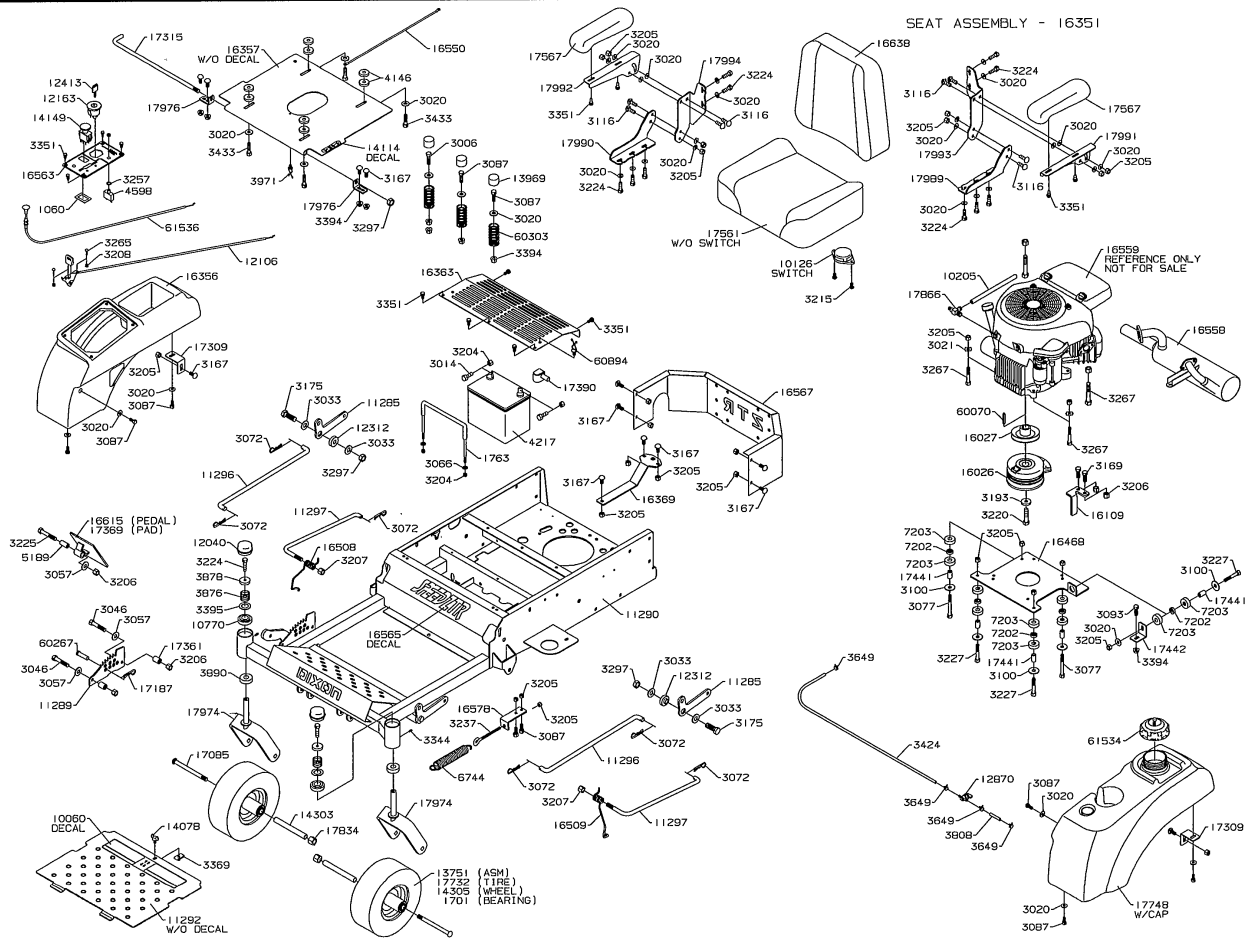


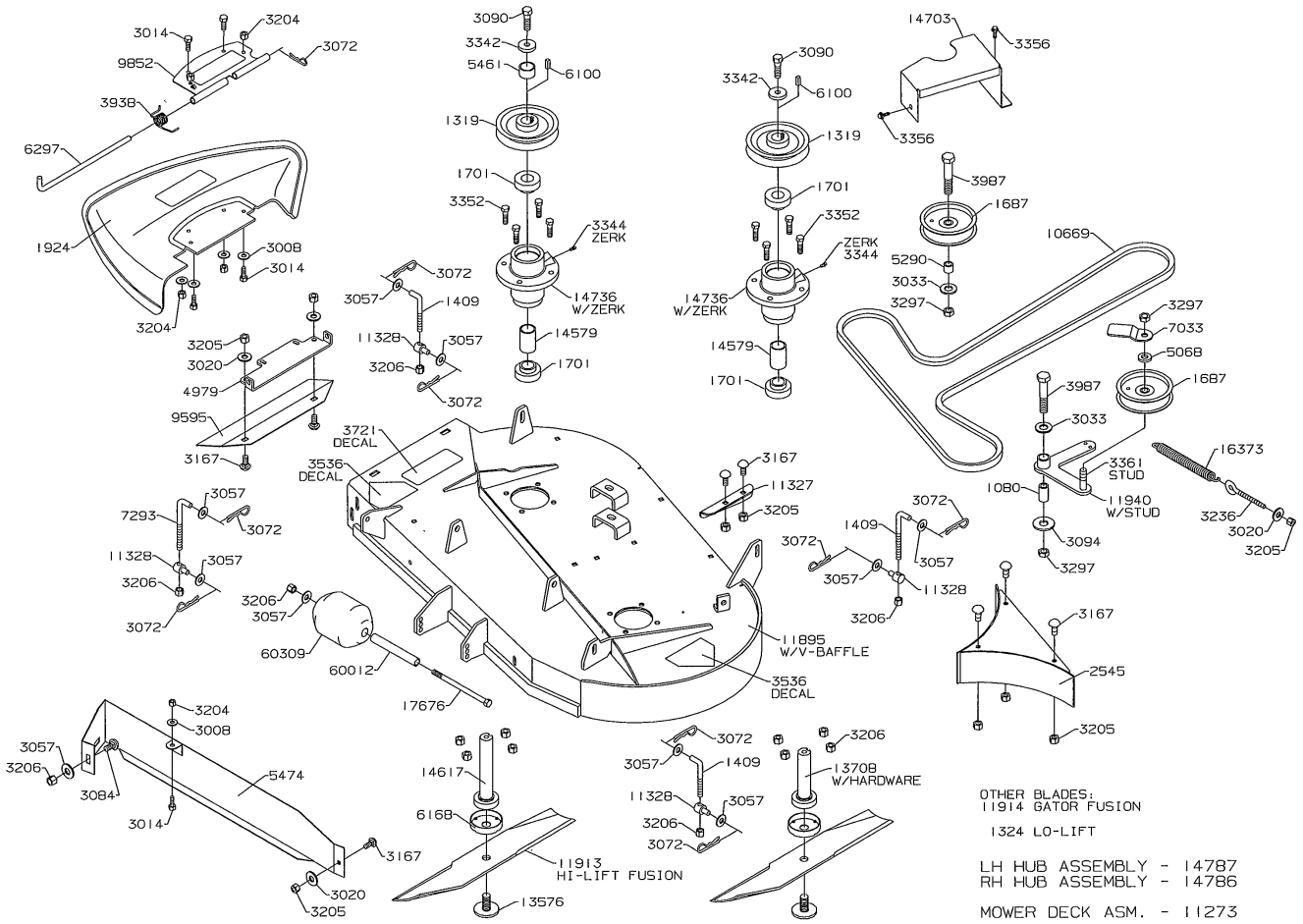
2006 PRODUCTION

44" SPEEDZTR CHASSIS (KOHLER)

2006 PRODUCTION

44" SPEEDZTR CHASSIS (HONDA)





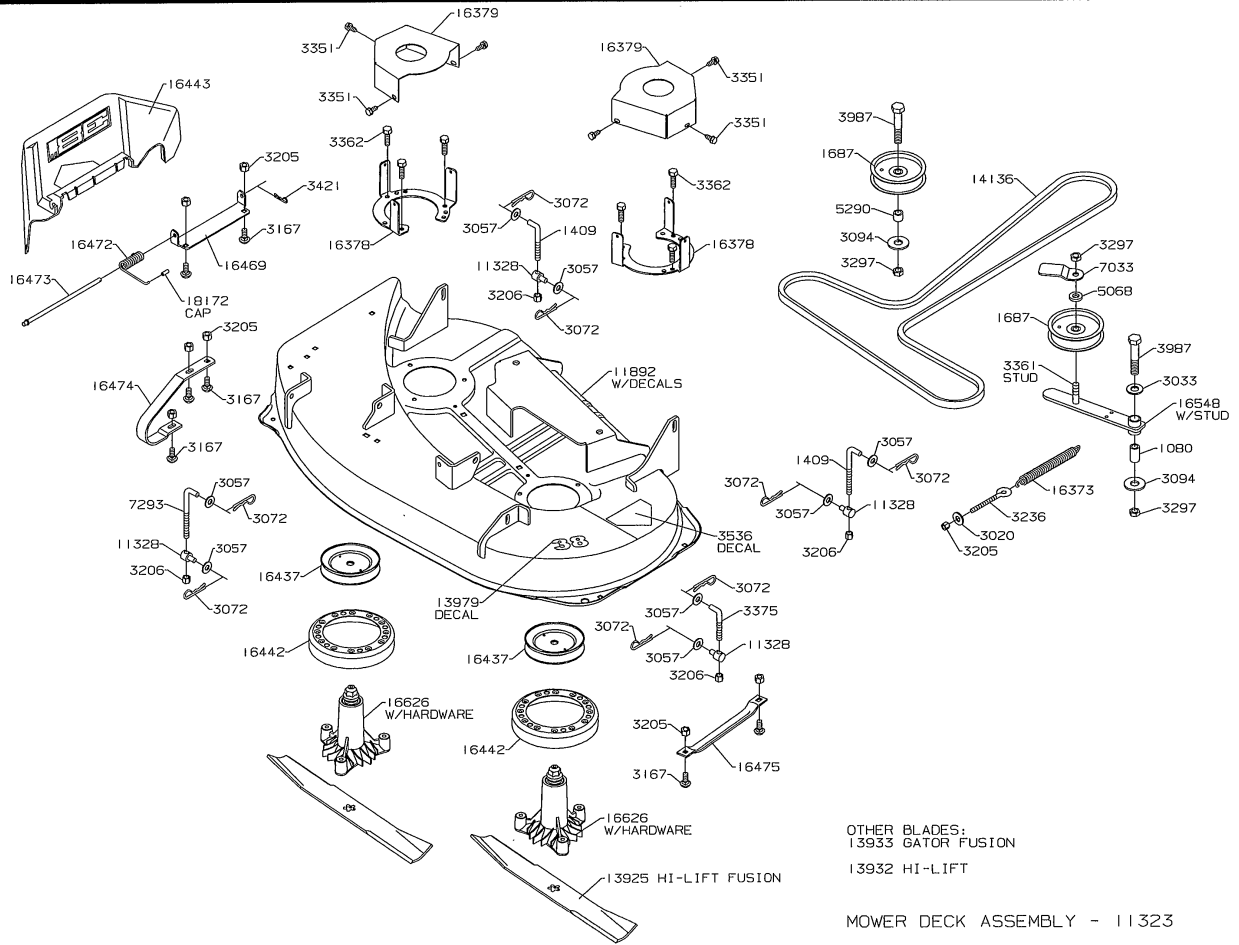
2006 PRODUCTION

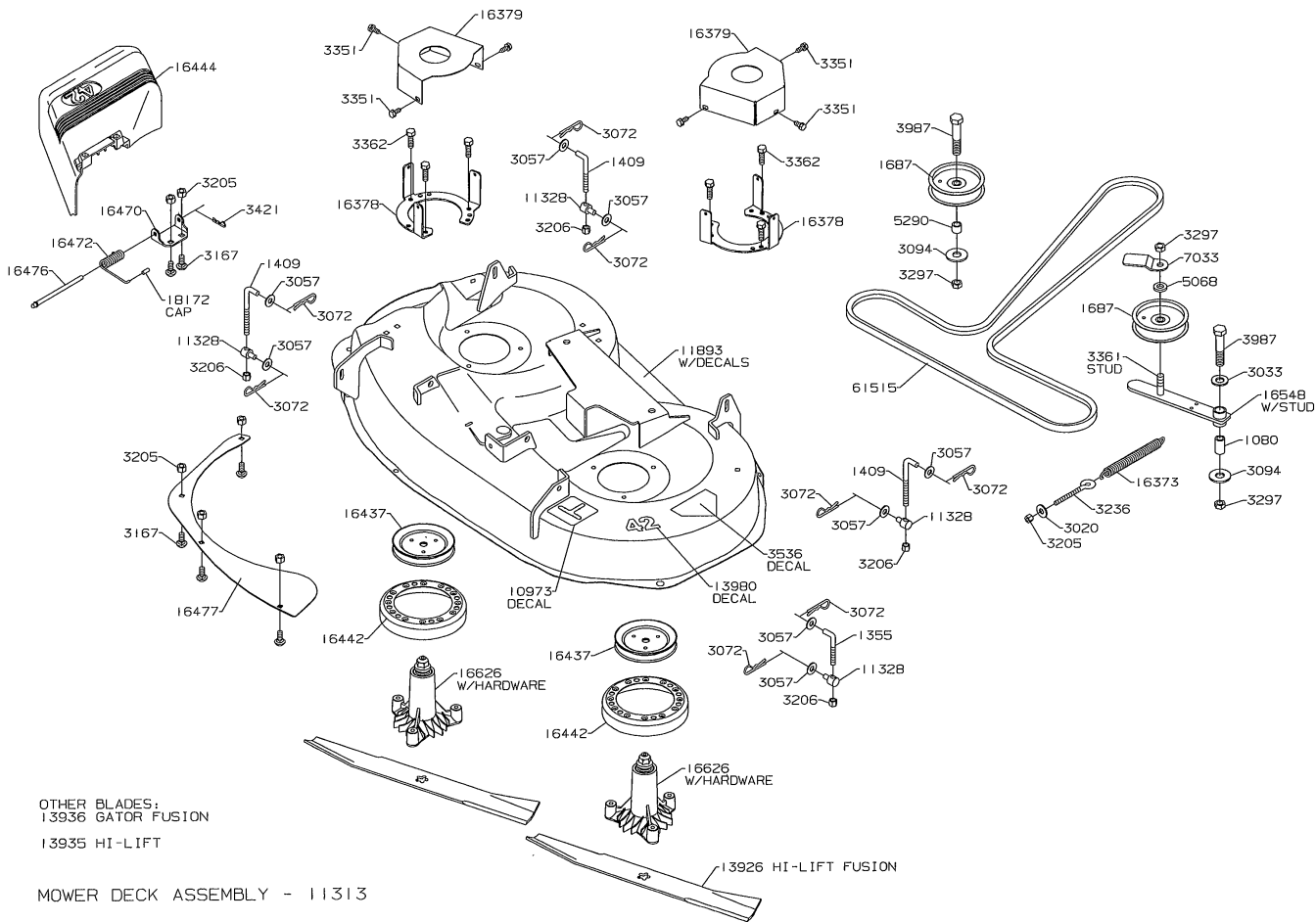
36" SPEEDZTR MOWER DECK



2006 PRODUCTION

38" SPEEDZTR MOWER DECK



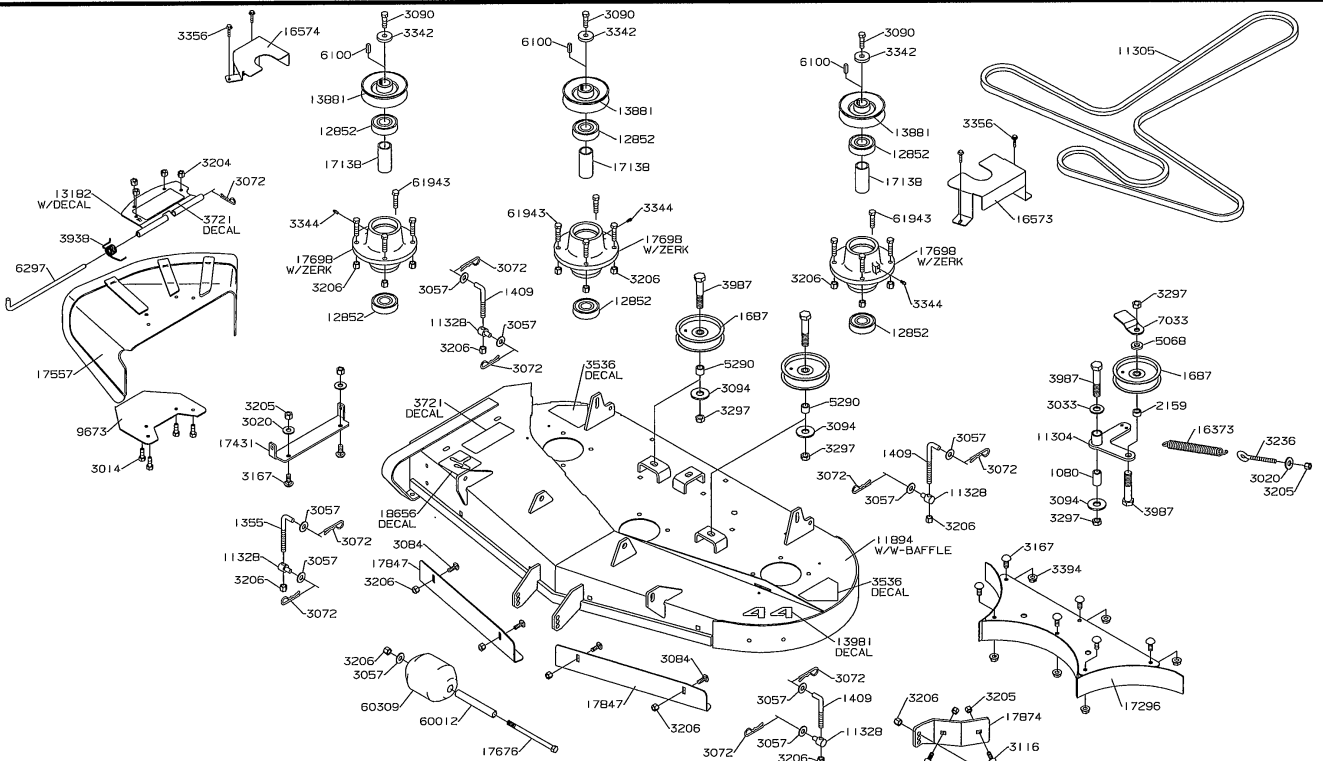


**2006 PRODUCTION**

**42" SPEEDZTR MOWER DECK**

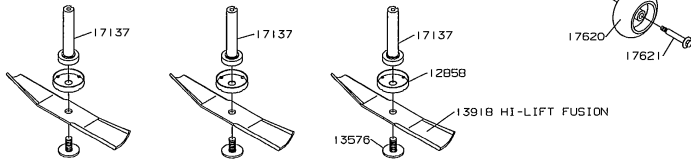
2006 PRODUCTION

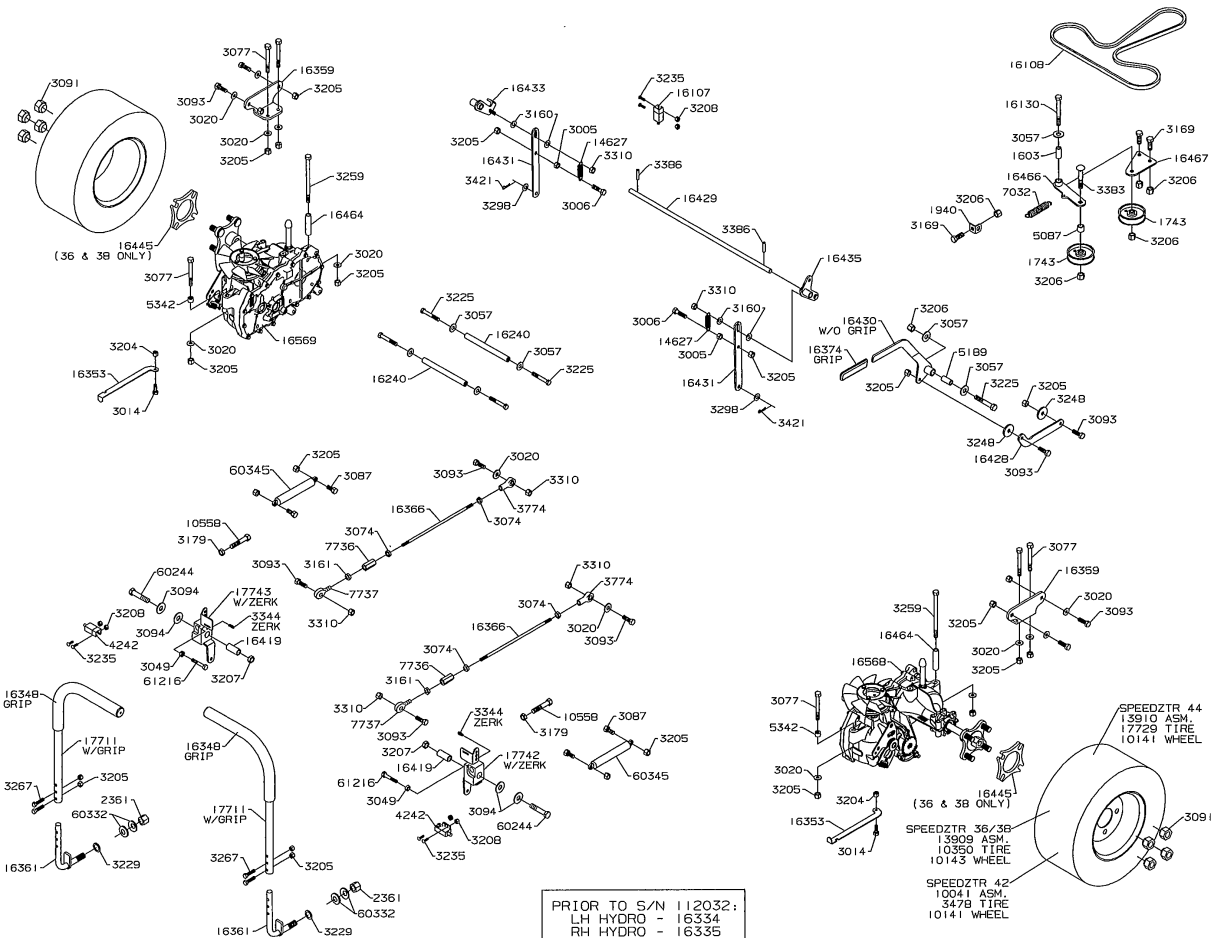
44" SPEEDZTR MOWER DECK



OTHER BLADES:  
13945 STANDARD LIFT FUSION  
13867 SUPER HI-LIFT FUSION  
13947 GATOR FUSION  
13943 HI-LIFT  
13944 STANDARD LIFT

MOWER DECK ASM. - 11280  
HUB ASSEMBLY - 16575





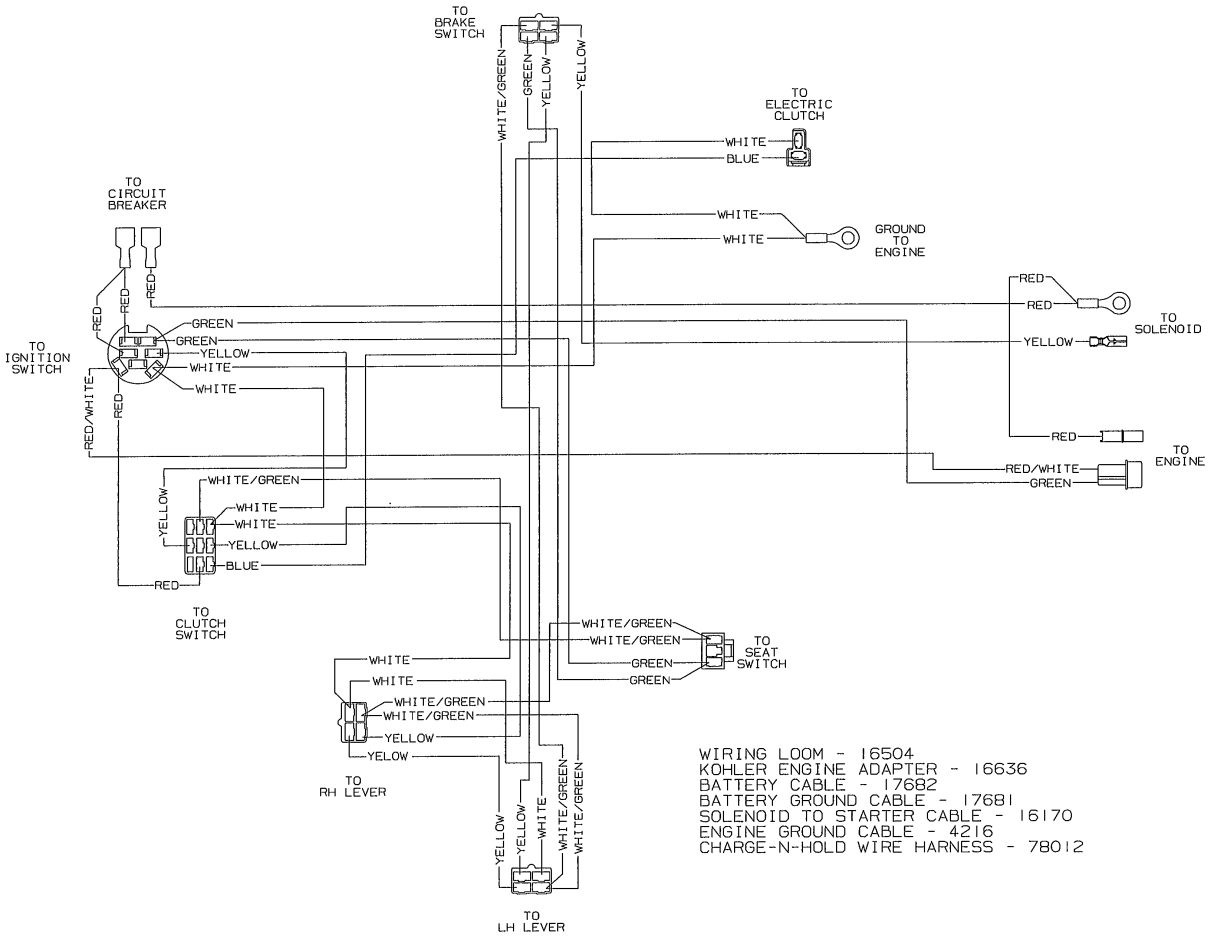
PRIOR TO S/N 112032:  
LH HYDRO - 16334  
RH HYDRO - 16335

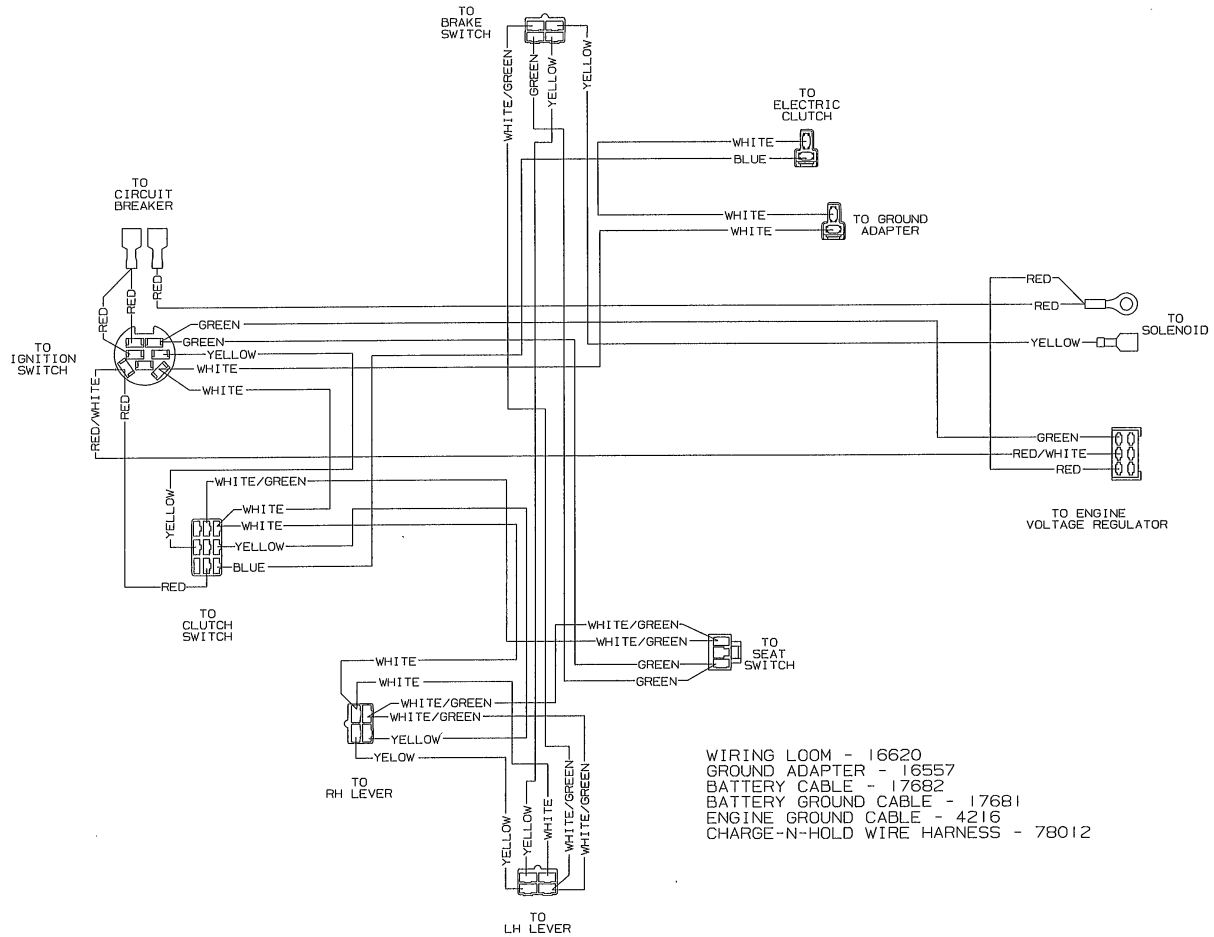
2006 PRODUCTION

36"/38"/42"/44" SPEEDZTR DRIVE TRAIN

2006 PRODUCTION

36"/38"/42"/44" SPEEDZTR WIRING (BRIGGS & KOHLER)





2006 PRODUCTION

44" SPEEDZTR WIRING (HONDA)